



ENGIE ENCORE Ready for an Energy Encore?

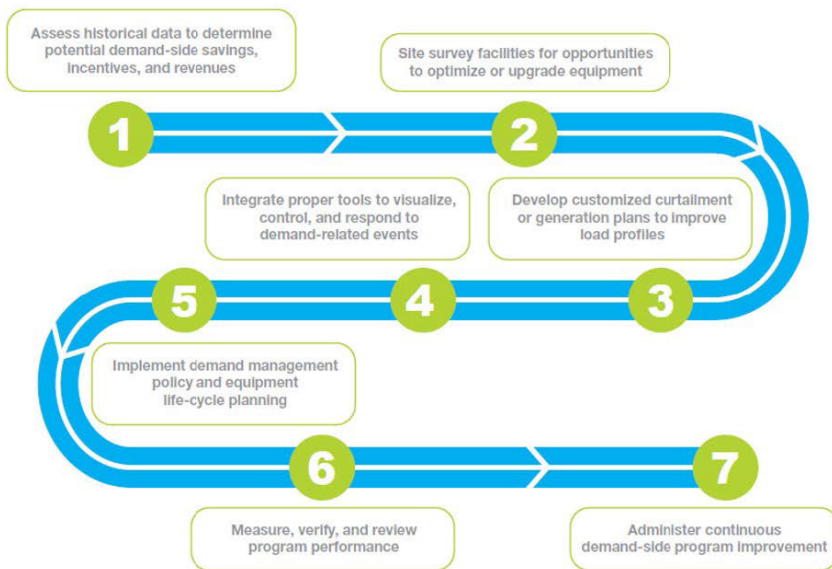
There is no better time to explore sustainability than on the heels of a recent supply agreement.

If you're ready for a curtain call that keeps the momentum going, ENGIE offers a suite of sustainability products that serve as a perfect encore and makes you and your organization leaders in the low carbon transition.



Peak Load Management

Grid operators and utilities charge punitive transmission and distribution fees based on volume consumed during coincident peaks. Regulators approve annual tariffs that are applied to end-user consumption during coincident peaks. Peak load management is a custom economic program that lowers consumption during periods of peak demand.



Real Time Monitoring

Achieve greater visibility into operations and improve performance with real time monitoring. Your organization gains the intelligence to validate market and operational opportunities to adjust usage for a more manageable load profile and lower cost of power.

Aggregated usage is available on a daily, weekly, or monthly basis. Track facilities, set alerts, review peak stats, and monitor performance according to usage and demand. Take advantage of real-time alerts, triggers, and auto-control mechanisms. Automate load changes or execute manually.

Current Load [†]	
2,240.35 kW	Today's peak 2,249.35 kW Today's low 1,302.11 kW

CURRENT LOAD
See the big picture with real-time usage fundamentals such as your facility's current load, as well as today's peak and low usage points.

Peak Stats [†]	Avg Usage Stats [†]
2,216.26 kW ↓ Peak This Week	1,800.5 kWh ↑ Avg Usage This Week
3,211.20 kW ↓ Peak This Month	1,828.5 kWh ↓ Avg Usage This Month
3,289.15 kW ↑ Peak Year To Date	1,713.7 kWh ↓ Avg Usage Year To Date

PEAK LOAD AND USAGE STATS
Analyze peak load electricity demand and average usage patterns to recognize trends and assess strategic opportunities to optimize spending and manage peaks.

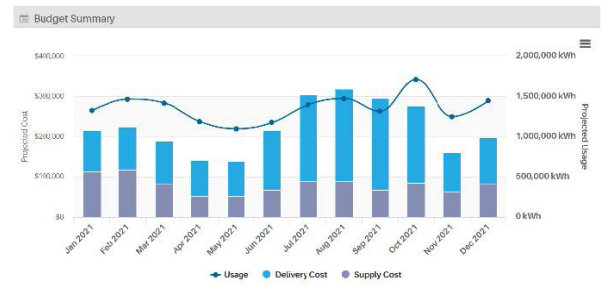
Ready to get started? | Visit engiesustainability.com



20/20

ENGIE 20/20 provides insight into your energy use, demand, and cost trends by benchmarking against user-defined Key Performance Indicators (KPIs)—helping identify usage and demand anomalies that allow you to be proactive and control energy costs. ENGIE 20/20 then notifies your ENGIE account team of these anomalies, so they can alert you and help determine the cause.

The online platform provides a view of your aggregated energy spend across your entire portfolio, or a drill-down to view account-level data for one site.



On-Bill Financing

Improve your bottom line and exceed your sustainability goals while offsetting capital investment. ENGIE designs and applies comprehensive projects to provide robust energy savings and an attractive ROI. ENGIE’s on-bill funding solutions allow energy-efficiency projects to be implemented quickly and efficiently.

- Seamless Integration with ENGIE Energy Supply
- Equipment and Contractor Agnostic
- Reduced Overall Energy Spend
- Little to No Initial Capital Expenditure
- Flexible Contract Terms of 36 to 84 months

Demand Response

ENGIE enables access to demand response programs where customers are incentivized to reduce consumption during extreme grid imbalance and market pricing conditions. Participants may voluntarily offer flexible loads in response to timely signals for annual payments upwards of *\$50,000 MW/Year. Together with our partners, we manage the steps necessary to get started including equipment, data integration, program enrollment, 24-7 monitoring, settlements, and compliance.

*ERCOT ERS Program historical estimate. Depending on the market and capacity auctions, payments will vary from year-to-year.

Efficiency Audits

Energy efficiency can get the U.S. halfway to its climate goals. ENGIE can provide energy efficiency site audits at low, or no cost to existing customers. We assemble a project team that is dedicated to a range of sustainable building lifecycle solutions born from data analysis, including mechanical, electrical, and other efficiency technology, financing options, renewables and storage. Independent studies predict savings of 30% or more for industrials in a scenario of greater penetration of advanced technologies. Additionally, employee, product quality and other benefits can exceed 40% of the direct energy bill savings.

Resiliency

Backup generation offers several benefits. Operational resiliency during a power supply disruption can easily cost \$100,000 per event. Backup generation reduces the volume of energy consumed during peak load periods. It also can shift load to leverage economic demand programs. ENGIE can put you on the path to resiliency. With ENGIE Advantage on-bill funding program, you can achieve resilience while offsetting capital expenses.

Ready to get started? | Visit engiesustainability.com